



Numerical Solution of Fractional Model for Heat Conduction in Polar Bear Hairs Equation by q-homotopy Analysis Method (q-HAM)

Research Article

Anoop Kumar^{1*}¹ School of Basic and Applied Sciences, Central University of Punjab Bathinda (CUPB) in Centre for Mathematics & Statistics.

Abstract: In this paper, we consider the fractional model for heat conduction in polar bear hairs equation. A relatively new method called the q-homotopy analysis method (q-HAM) is adopted to obtain an analytical solution of the fractional model for heat conduction in polar bear hairs in series form. The convergence rate of the method used is faster in the sense that just very few terms of the series solution are needed for a good approximation due to the presence of the auxiliary parameter h comparable to exact solutions. Numerical solution obtained by this method is compared with the exact solution. Our error analysis shows that the analytical solution converges very rapidly to the exact solution. Numerical results are obtained using the software Mathematica.

Keywords: q-homotopy analysis method (q-HAM), fractional model for heat conduction in polar bear hairs equation, approximate numerical solutions, symbolic computation.

© JS Publication.

1. Introduction

For the importance of obtaining the exact and approximate solutions of fractional nonlinear partial differential equations in physics and mathematics is still a significant problem that needs new methods to discover the exact and approximate solutions. But these fractional nonlinear partial differential equations are difficult to get their exact solutions [1, 2]. So, numerical methods have been used to handle these equations [3], and some semi analytical techniques have also largely been used to solve these equations. Such as, Adomian decomposition method [4], variational iteration method [5, 6], differential transform method [7], Laplace decomposition method [8], homotopy perturbation method [9] and homotopy analysis method (HAM) [10, 11].

The HAM initially proposed by Liao in his Ph.D. thesis [10] is a powerful method to solve nonlinear problems. In recent years, this method has been successfully employed to solve many types of nonlinear problems in science and engineering [12, 13]. HAM contains a certain auxiliary parameter h , which provides us with a simple way to adjust and control the convergence region and rate of convergence of the series solution. Many workers applied HAM to solve fractional differential equations [14, 15]. El-Tawil and Huseen [16] established a method namely q-homotopy analysis method (q-HAM) which is a more general method of HAM, the q-HAM contains an auxiliary parameter n as well as h such that the case of

* E-mail: anoopmath85@gmail.com

$n = 1(q - HAM; = 1)$ the standard homotopy analysis method (HAM) can be reached. The q-HAM has been successfully applied to numerous problems in science and engineering [16]. In this paper, we have applied the q-homotopy analysis method (q-HAM) [17, 18] to construct an appropriate solution to the fractional model for heat conduction in polar bear hairs equation [19] with given initial condition. The main advantage of the method is the fact that it provides its user with an analytical approximation solution, in a rapidly convergent series with elegantly computed terms. The structure of this paper is organized as follows:

In section 2, we begin with the basic definition of Caputo's fractional derivative. In section 3, we give the basic concept of the q-homotopy analysis method (q-HAM). In section 4, we apply this method to solve the fractional model for heat conduction in polar bear hairs equation with given initial condition.

2. Preliminaries

This section is devoted to some definitions and some known results. Caputo's fractional derivative is adopted in this work.

Definition 2.1. The Riemann-Liouville's (RL) fractional integral operator of order $\alpha \geq 0$, of a function $f \in L^1(a, b)$ is given as

$$I^\alpha f(t) = \frac{1}{\Gamma(\alpha)} \int_0^t (t - \tau)^{\alpha-1} f(\tau) d\tau, \quad t > 0, \alpha > 0, \quad (1)$$

where Γ is the Gamma function and $I^0 f(t) = f(t)$.

Definition 2.2. The fractional derivative in the Caputo's sense is defined as [4]

$$D^\alpha f(t) = I^{n-\alpha} D^n f(t) = \frac{1}{\Gamma(n-\alpha)} \int_0^t (t - \tau)^{n-\alpha-1} f^{(n)}(\tau) d\tau, \quad (2)$$

where $n - 1 < \alpha \leq n$, $n \in N$, $t > 0$.

Lemma 2.3. Let $t \in (a, b]$. Then

$$\left[I^\alpha (t - a)^\beta \right] (t) = \frac{\Gamma(\beta + 1)}{\Gamma(\beta + \alpha + 1)} (t - a)^{\beta + \alpha}, \quad \alpha \geq 0, \beta > 0. \quad (3)$$

3. Basic Concepts of q-homotopy Analysis Method

Considering the following differential equation of the form:

$$N[D_t^\alpha u(x, t)] - f(x, t) = 0, \quad (4)$$

where N is a nonlinear operator, D_t^α denote the Caputo's fractional derivative, $u(x, t)$ is an unknown function, x and t denote the space and time variables and $f(x, t)$ is a known function, respectively. To generalize the original homotopy method, the zeroth-order deformation equation is constructed as

$$(1 - nq) L[\varphi(x, t; q) - u_0(x, t)] = q \hbar H(x, t) (N[D_t^\alpha \varphi(x, t; q)] - f(x, t)), \quad (5)$$

where $n \geq 1$, $q \in [0, \frac{1}{n}]$ denotes the so called embedding parameter, $\hbar \neq 0$ is a non-zero auxiliary parameter, $H(x, t)$ is a non-zero auxiliary function, L is an auxiliary linear operator, $u_0(x, t)$ is an initial guess of $u(x, t)$ and $\varphi(x, t; q)$ is an unknown

function. It is important to note that one has great freedom to choose the auxiliary things in q-HAM. Clearly, when $q = 0$ and $q = \frac{1}{n}$, it holds that:

$$\varphi(x, t; 0) = u_0(x, t) \text{ and } \varphi(x, t; \frac{1}{n}) = u(x, t). \tag{6}$$

Thus, as q increases from 0 to $\frac{1}{n}$, the solution $\varphi(x, t; q)$ varies from the initial guess $u_0(x, t)$ to the solution $u(x, t)$. If $u_0(x, t)$, L , h , $H(x, t)$ are chosen approximately, the solution $\varphi(x, t; q)$ of equation (5) exists for $q \in [0, \frac{1}{n}]$. Expanding $\varphi(x, t; q)$ in Taylor's series about $q = 0$, we have:

$$\varphi(x, t; q) = u_0(x, t) + \sum_{m=1}^{\infty} u_m(x, t)q^m, \tag{7}$$

where

$$u_m(x, t) = \frac{1}{m!} \left. \frac{\partial^m \varphi(x, t; q)}{\partial q^m} \right|_{q=0}. \tag{8}$$

We suppose that the auxiliary linear operator L , the initial guess u_0 , the nonzero auxiliary function $H(x, t)$ and the nonzero auxiliary parameter \hbar are properly chosen such that the above series (7) converges at $q = \frac{1}{n}$, and then we have:

$$u(x, t) = \varphi(x, t; \frac{1}{n}) = u_0(x, t) + \sum_{m=1}^{\infty} u_m(x, t) \left(\frac{1}{n}\right)^m, \tag{9}$$

which must be one of the solutions of the original non-linear differential equation. Let the vector u_n be defined as follows:

$$\vec{u}_n = \{u_0(x, t), u_1(x, t), u_2(x, t), \dots, u_n(x, t)\}. \tag{10}$$

Differentiating the equation (5), m -times with respect to the (embedding) parameter q , then evaluating at $q = 0$ and finally dividing them by $m!$ throughout, we obtain the m -th order deformation equation (Lioa [13]) as:

$$L[u_m(x, t) - \chi_m^* u_{m-1}(x, t)] = \hbar H R_m(u_{m-1}^{\rightarrow}(x, t)) \tag{11}$$

with initial conditions $u_m^{(k)}(x, t) = 0, k = 0, 1, 2, 3, \dots, m - 1$

$$R_m(u_{m-1}^{\rightarrow}(x, t)) = \frac{1}{(m-1)!} \left. \frac{\partial^{m-1} (N[D_t^\alpha \varphi(x, t; q)] - f(x, t))}{\partial q^{m-1}} \right|_{q=0} \tag{12}$$

and

$$\chi_m^* = \begin{cases} 0, & m \leq 1, \\ n, & \text{otherwise.} \end{cases} \tag{13}$$

Remark 3.1. It should be emphasized that $u_m(x, t)$ for $m \geq 1$ is governed by the linear operator (11) with the linear boundary conditions that come from the original problem. The existence of the factor $(\frac{1}{n})^m$, more chances for convergence may occur or even much faster convergence can be obtained better than the standard HAM. It should be noted that the cases of $(n = 1)$ in equation (5), the standard HAM can be reached.

4. Approximate Series Solution of the Problem

In this section, we shall apply the q-HAM to obtain the series solution of the fractional model for heat conduction in polar bear hairs equation with given initial condition.

4.1. The Fractional Model for Heat Conduction in Polar Bear Hairs Equation

We consider the following fractional model for heat conduction in polar bear hairs equation proposed by Qing-Li et al. as,

$$D_t^\alpha u + \eta \frac{\partial^2 u}{\partial x^2} = 0, \quad t > 0, \quad 0 < \alpha \leq 1, \quad (14)$$

where $D_t^\alpha u$ is the modified Riemann-Liouville derivative and η is a constant, with the initial condition

$$u(x, 0) = a - \frac{a-b}{1 - \exp(-1/k\eta)} + \frac{a-b}{1 - \exp(-1/k\eta)} \exp(-x/k\eta), \quad (15)$$

where a is the body temperature, b is the environment temperature, and k is a constant. The true solution for $\alpha = 1$ of the equation (14) which is obtained by the MFRDTM [24] is given by

$$u(x, t) = a - \frac{a-b}{1 - \exp(-1/k\eta)} + \frac{a-b}{1 - \exp(-1/k\eta)} \exp(-x/k\eta - t/k^2\eta). \quad (16)$$

Let us now solve the equation (14) by the q-homotopy analysis method (q-HAM). We choose the linear non-integer order operator as:

$$L[\varphi(x, t; q)] = D_t^\alpha \varphi(x, t; q), \quad (17)$$

with the property $L(c_1) = 0$, where c_1 is constant. Also, we use $u(x, 0) = a - \frac{a-b}{1 - \exp(-1/k\eta)} + \frac{a-b}{1 - \exp(-1/k\eta)} \exp(-x/k\eta)$, as the initial approximation. From the equation (14), we define the non-linear fractional partial differential operator as:

$$N[\varphi(x, t; q)] = D_t^\alpha \varphi(x, t; q) + \eta \varphi_{xx}(x, t; q). \quad (18)$$

Using the above definitions, we construct the zero-order deformation equation:

$$(1 - nq)L[\varphi(x, t; q) - u_0(x, t)] = q\hbar H(x, t) N[D_t^\alpha \varphi(x, t; q)]. \quad (19)$$

Choosing the $H(x, t) = 1$, we define the m th-order deformation equation as:

$$L[u_m(x, t) - \chi_m^* u_{m-1}(x, t)] = \hbar R_m(u_{m-1}^{\rightarrow}(x, t)), \quad (20)$$

with the initial condition for $m \geq 1$, $u_m(x, 0) = 0$, where $\chi_m^* = \begin{cases} 0, & m \leq 1, \\ n, & \text{otherwise} \end{cases}$ and

$$R_m(u_{m-1}^{\rightarrow}(x, t)) = D_t^\alpha u_{m-1}(x, t) + \eta (u_{m-1}(x, t))_{xx}. \quad (21)$$

Now the solution of equation (20), for $m \geq 1$ becomes

$$u_m(x, t) = \chi_m^* u_{m-1}(x, t) + \hbar L^{-1}[R_m(u_{m-1}^{\rightarrow}(x, t))]. \quad (22)$$

It is straightforward to choose the initial approximation $u_0(x, t) = u(x, 0)$ which is given by the equation (15). Therefore, using the q-HAM, we obtain the components of the solution successively as follows. We, therefore, obtain:

$$\begin{aligned} u(x, 0) &= a - \frac{a-b}{1 - \exp(-1/k\eta)} + \frac{a-b}{1 - \exp(-1/k\eta)} \exp(-x/k\eta) \\ u_1(x, t) &= \hbar D_t^{-\alpha} [D_t^\alpha u_0 + \eta (u_0)_{xx}] \\ &= \hbar I_t^\alpha [D_t^\alpha u_0 + \eta (u_0)_{xx}] = \frac{\hbar (a-b) e^{-x/k\eta}}{\eta \left(1 - e^{-1/k\eta}\right) k^2} \frac{t^\alpha}{\Gamma(\alpha+1)}, \end{aligned} \quad (23)$$

$$\begin{aligned}
 u_2(x, t) &= nu_1 + \hbar D_t^{-\alpha} [D_t^\alpha u_1 + \eta (u_1)_{xx}] \\
 &= nu_1 + \hbar I_t^\alpha [D_t^\alpha u_1 + \eta (u_1)_{xx}] \\
 &= \frac{\hbar (\hbar + n) (a - b) e^{-x/k \eta}}{\eta \left(1 - e^{-1/k \eta}\right) k^2} \frac{t^\alpha}{\Gamma(\alpha + 1)} + \frac{\hbar^2 (a - b) e^{-x/k \eta}}{\eta^2 \left(1 - e^{-1/k \eta}\right) k^4} \frac{t^{2\alpha}}{\Gamma(2\alpha + 1)},
 \end{aligned} \tag{24}$$

$$\begin{aligned}
 u_3(x, t) &= nu_2 + \hbar D_t^{-\alpha} [D_t^\alpha u_2 + \eta (u_2)_{xx}] \\
 &= nu_2 + \hbar I_t^\alpha [D_t^\alpha u_2 + \eta (u_2)_{xx}] \\
 &= \frac{\hbar (\hbar + n)^2 (a - b) e^{-x/k \eta}}{\eta \left(1 - e^{-1/k \eta}\right) k^2} \frac{t^\alpha}{\Gamma(\alpha + 1)} + \frac{2 \hbar^2 (\hbar + n) (a - b) e^{-x/k \eta}}{\eta^2 \left(1 - e^{-1/k \eta}\right) k^4} \frac{t^{2\alpha}}{\Gamma(2\alpha + 1)} \\
 &\quad + \frac{\hbar^3 (a - b) e^{-x/k \eta}}{\eta^3 \left(1 - e^{-1/k \eta}\right) k^6} \frac{t^{3\alpha}}{\Gamma(3\alpha + 1)}.
 \end{aligned} \tag{25}$$

From the equations (23), (24) and (25), we obtain $u_1(x, t)$, $u_2(x, t)$ and $u_3(x, t)$ similarly by putting $m = 4, 5, \dots$ in equation (22), we can obtain $u_i(x, t)$, $i \geq 4$ by using the Mathematica. Therefore, the four-terms approximate series solution to the problem (14) in terms of convergence parameter h and n is given by

$$u(x, t, n, h) \cong u_4(x, t, n, h) = \sum_{i=0}^4 u_i(x, t, n, h) \left(\frac{1}{n}\right)^i. \tag{26}$$

Remark 4.1. It should be emphasized that $u_m(x; t)$ for $m > 1$, is governed by the linear operator (7) with the linear boundary conditions that come from the original problem. The existence of the factor $\left(\frac{1}{n}\right)^i$ gives more chances for better convergence, faster than the solution obtained by the standard HAM. Of course, when $n = 1$, we are in the case of the standard HAM.

4.2. The h-curve

The question that comes to the mind when the following this method of solution is how one chooses the auxiliary parameter h to get a good approximate solution. The answer is in the h -curve. Apparently, our choice in the plots can be seen directly from the graph, the range of which is by drawing a horizontal line on the curve parallel to x -axis. Fig. 1 is made with $n = 1$ and $\alpha = 1$.

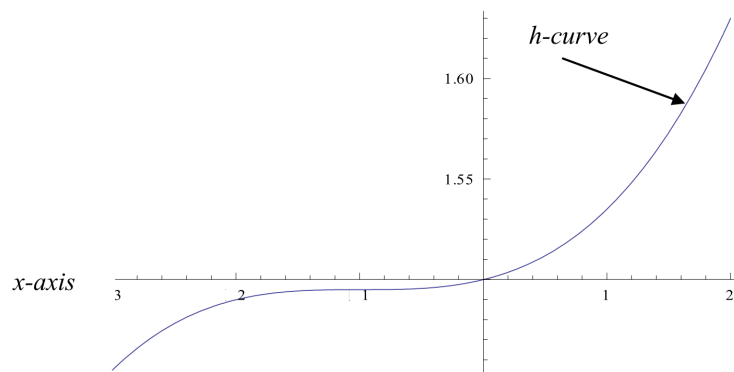


Figure 1: The h -curve of $u(x, t, n, h)$ of the four-terms approximate series solution of the equation (26) obtained by q-HAM for fixed the value of $n = 1$ and $\alpha = 1$.

5. Numerical Analysis

In this section, we give some numerical results using series solution obtained above. Comparison is made with the exact solution for a special case using the four-terms series solution. We also seen the graph displaying the best choice of h for fast convergence and the effects of different fractional order α on the solution obtained.

5.1. Comparison of the Approximate Solution with Exact Solution

Exact solution is known in the case of $\alpha = 1$ and so we present the numerical result (four-terms series solution) obtained by the q-homotopy analysis method and the exact solution of equation the (14) under some conditions.

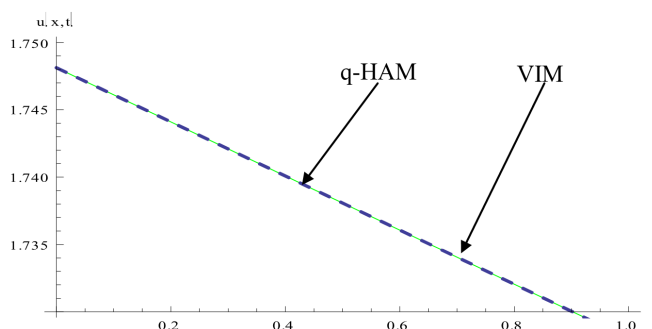


Figure 2: The seven-terms approximation solution of the q-HAM plot of $u(x, t)$ for $h = 0.88$, $n = 1$ and $\alpha = 1$ against the exact solution obtained by VIM.

Remark 5.1. *It should be noted that we have used only the four-terms of the series solution obtained by the q-homotopy analysis method to make Fig.2 as against the solution obtained by the variation iteration method [VIM]. Fig.2 shows a perfect match with exact solution. This shows the effectiveness of the homotopy analysis method over other analytical methods due to the ability to control or choose appropriately the auxiliary parameter h .*

5.2. Solution Plots with Different Fractional Values of α

Here, we give the solution plots of the four-terms series solution (26) of the equation (14) using the MATHEMATICA obtained by q-homotopy analysis method (q-HAM). This shows the effect of the different fractional values of α on the obtained solution (26) in figure 4 and 5.

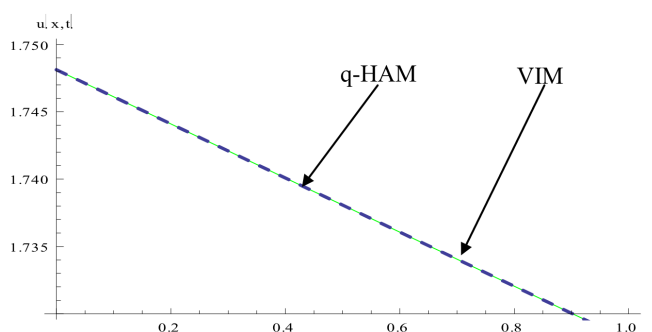


Figure 3: The q-HAM solution plot of Eq. (14) for different fractional values of α with fixed $t = 0.5$, $h = -0.88$ and $n = 1$.

t	x	$\alpha = 1$	$\alpha = 0.75$	$\alpha = 0.50$	$\alpha = 0.25$
.01	-3	0.0000000	5.2353322E-4	2.2057680E-3	7.2679916E-3
	-2	0.0000000	5.1316656E-4	2.1620908E-3	7.1240758E-3
	-1	7.1054274E-15	5.0300518E-4	2.1192786E-3	6.9830097E-3
	0	7.1054274E-15	4.9304501E-4	2.0773141E-3	6.8447368E-3
	1	0.0000000	4.7371244E-4	2.0361805E-3	6.7092019E-3
	2	0.0000000	4.8328206E-4	1.9958614E-3	6.5763508E-3
	3	0.0000000	4.6433223E-4	1.9563407E-3	6.4461303E-3
.02	-3	7.1054273E-15	8.1221318E-4	2.9937278E-3	8.4690173E-3
	-2	7.1054273E-15	7.9613028E-4	2.9344480E-3	8.3013319E-3
	-1	0.0000000	7.8036584E-4	2.8763421E-3	8.1369424E-3
	0	0.0000000	7.6491356E-4	2.8193866E-3	7.9758201E-3
	1	0.0000000	7.4976726E-4	2.7635590E-3	7.8178883E-3
	2	0.0000000	7.3492087E-4	2.7088369E-3	7.6630837E-3
	3	0.0000000	7.2036684E-4	2.6551983E-3	7.5113445E-3
.03	-3	0.0000000	1.0388373E-3	3.5484239E-3	9.2036168E-3
	-2	0.0000000	1.0182670E-3	3.4781605E-3	9.0213729E-3
	-1	0.0000000	9.9810398E-3	3.4092883E-3	8.8427378E-3
	0	0.0000000	9.7834019E-4	3.3417798E-3	8.6676398E-3
	1	0.0000000	9.5896796E-4	3.2755608E-3	8.4960091E-3
	2	7.1054274E-15	9.3997899E-4	3.2107467E-3	8.3277768E-3
	3	0.0000000	9.2136610E-4	3.1471697E-3	8.1628758E-3
.04	-3	0.0000000	1.2294477E-3	3.9823743E-3	9.7232855E-3
	-2	0.0000000	1.2051030E-3	3.9035180E-3	9.5307515E-3
	-1	0.0000000	1.1812404E-3	3.8262231E-3	9.3420300E-3
	0	-7.1054274E-15	1.1578502E-3	3.8262231E-3	9.1570454E-3
	1	0.0000000	1.1349233E-3	3.6761948E-3	8.9757238E-3
	2	0.0000000	1.1124503E-3	3.6034012E-3	8.7979925E-3
	3	-7.1054274E-15	1.0904222E-3	3.5320492E-3	8.6237806E-3
.05	-3	0.0000000	1.3952247E-3	4.3391617E-3	1.0115735E-2
	-2	7.1054274E-15	1.3675974E-3	4.2532406E-3	9.1542298E-3
	-1	0.0000000	1.3405172E-3	4.1690208E-3	9.7190911E-3
	0	0.0000000	1.3139731E-3	4.0864686E-3	9.5266402E-3
	1	0.0000000	1.2879547E-3	4.0055511E-3	9.3380001E-3
	2	0.0000000	1.2624152E-3	3.9262359E-3	9.1530953E-3
	3	0.0000000	1.2374330E-3	3.8484913E-3	8.9718519E-3

Table 1: Absolute errors for $u(x, t)$ obtained by the four-terms approximate series solution (26) the equation (14) obtained the q-HAM against with the exact solution obtained by variation iteration method [VIM] for $n=1$ and $h=-0.95$

A very good agreement between the results of the q-HAM and the exact solutions is observed in Figures 2, 3 and Table 1, which confirms the validity of the q-HAM.

6. Conclusion

In this paper, we have successfully applied q-homotopy analysis method (q-HAM) to obtain an approximation of the analytic solution of the fractional model for heat conduction in polar bear hairs equation. In this method, the solution is found in the form of a convergent series with easily computed terms. The results obtained by the q-homotopy analysis method (q-HAM) are compared with the variation iteration method [VIM] solution, which show a very good agreement, even using only few terms of the recursive relations. In general, this method provides highly accurate numerical solutions and can be applied to a wide class of nonlinear problems. Also, the method avoids linearization and physically unrealistic assumptions. The results demonstrate reliability and efficiency of the q-homotopy analysis method (q-HAM). The fact that this technique solves the linear and nonlinear problems can be considered as a clear advantage of this algorithm over the decomposition method. Finally, we conclude that the q-HAM can be considered as a nice refinement in existing numerical techniques and have wide applications in different fields of sciences.

Acknowledgement

The authors, Dr. Anoop Kumar is highly thankful to the Central University of Punjab bathinda (CUPB), Punjab, India for the financial support from the University Research Seed Money (RSM) grant and all the necessary facility. The author also would like to express their sincere thanks to the Professor Dr. Rajan Arora, Department of Applied Science and Engineering, I.I.T. Roorkee, Roorkee, for his valuable motivation and suggestions.

References

- [1] Y.Q.Liu and J.H.Ma, *Exact solutions of a generalized multi-fractional nonlinear diffusion equation in radical symmetry*, Communications in Theoretical Physics, 52(5)(2009), 857-861.
- [2] J.H.Ma and M.Y.Liu, *Exact solutions for a generalized nonlinear fractional Fokker-Planck equation*, Nonlinear Analysis Real World Applications, 11(1)(2010), 515-521.
- [3] Z.A.Anastassi and T.E.Simos, *New trigonometrically fitted six-step symmetric methods for the efficient solution of the Schrodinger equation*, Communications in Mathematical and in Computer Chemistry, 60(3)(2208), 733-752.
- [4] G.Adomian, *A review of the decomposition method in applied mathematics*, Journal of Mathematical Analysis and Applications, 135(2)(1988), 501-544.
- [5] J.H.He, *Variational iteration method- a kind of non-linear analytical technique: some examples*, International Journal of Non-Linear Mechanics, 34(4)(1999), 699-708.
- [6] R.Arora and A.Kumar, *Solution of Linear and Nonlinear PDEs by the He's Variational Iteration Method*, Recent Advances in Intelligent Control, Modelling and Computational Science, 2013(2013), 15-19.
- [7] A.Al-rabta, V.S.Ertürk and S.Momani, *Solutions of a fractional oscillator by using differential transform method*, Computers & Mathematics with Applications, 59(3)(2010), 1356-1362.
- [8] Y.Khan, *An effective modification of the laplace decomposition method for nonlinear equations*, International Journal of Nonlinear Sciences and Numerical Simulation, 10(11-12)(2009), 1373-1376.
- [9] J.H.He, *Application of homotopy perturbation method to nonlinear wave equations*, Chaos, Solitons and Fractals, 26(3)(2005), 695-700.
- [10] S.J.Liao, *The proposed homotopy analysis technique for the solution of nonlinear problems*, Ph.D thesis, Shanghai Jiao Tong University, (1992).
- [11] R.Arora and A.Kumar, *Solution of the Coupled Drinfeld's-Sokolov-Wilson (DSW) System by Homotopy Analysis Method*, Advanced Science, Engineering and Medicine, 5(2013), 1-7.
- [12] S.Abbasbandy, *The application of homotopy analysis method to nonlinear equations arising in heat transfer*, Physics Letters A, 360(2006), 109-113.
- [13] S.Abbasbandy, M.Ashtiani and E.Babolian, *Analytic solution of the Sharma-Tasso-Olver equation by homotopy analysis method*, Zeitschrift für Naturforschung, 65a(2010), 285-290.
- [14] O.Abdulaziz, I.Hashim and A.Saif, *Series Solutions of Time-Fractional PDEs by Homotopy Analysis Method*, Differential Equations and Nonlinear Mechanics, 2008(2008), Article ID 686512.
- [15] Ahmad El-Ajou, Zaid Odibat, Shaher Momani and Ahmad Alawneh, *Construction of Analytical Solutions to Fractional Differential Equations Using Homotopy Analysis Method*, IAENG International Journal of Applied Mathematics, 40(2).
- [16] M.A.El-Tawil and S.N.Huseen, *The q-Homotopy Analysis Method (q-HAM)*, International Journal of Applied mathematics and mechanics, 8 (15)(2012), 51-75.

- [17] J.H.He, *Application of homotopy perturbation method to nonlinear wave equations*, Chaos, Solitons and Fractals, 26(3)(2005), 695-700.
- [18] J.H.He, *Recent development of the homotopy perturbation method*, Topological Methods in Nonlinear Analysis, 31(2)(2008), 205-209.
- [19] J.H.He, *Variational iteration method-a kind of non-linear analytical technique: some examples*, International Journal of Non-Linear Mechanics, 34(4)(1999), 699-708.